

QUICK PATCH[®]

Light Activated Fiberglass Reinforced
Self-Adhesive Repair Patch

NO MIXING - NO MEASURING - NO MESS

UV TECHNOLOGY



It is the QUICK and EASY solution for all of your repair problems - GREAT for the tool box, job site, repair trucks, maintenance departments or at home!

Cut off just the amount you need or use the whole patch.

The easy-to-use fix that requires no mixing, no measuring, no mess, no tools.



SAND, PAINT OR DRILL IN ABOUT AN HOUR

Simply apply Quick Patch directly on Jet Ski's, Pools, Spas, Garden Equipment, all types of Boats, Surf Boards, Gutters, Roofs, PVC Pipes, Fiberglass, Plastic, Wood, Metal, Glass, Concrete, Doors, Fences and much more. Quick Patch uses are endless!

Cures & Hardens with the Sun's Natural UV Rays.

 **BULLSEYE**
PRODUCTS
www.BullseyeProductsUSA.com

3595 Polaris Ave, Las Vegas, NV 89103
302-231-2624
Dick.BullseyeProducts@yahoo.com


MADE IN THE
USA

QUICK PATCH[®]

Product Information Sheet

Quick Patch - UV Light activated repair patch
Now vacuum sealed for longer shelf life

UV TECHNOLOGY

Properties:

Quick Patch is a very unique, easy-to-use UV or sunlight activated, self-adhesive repair patch. It is fiberglass reinforced Polyester with extremely good adhesion properties for long lasting repairs. The patch is non-flammable, non-toxic, and the adhesive is not harmful to the skin. Easy to apply, no mixing, no weighing - one step, no mess.

Pro-facts:

- Easy application - just cut, peel and stick - finished.
- Extremely durable, Fiberglass reinforced Polyester/Plastic.
- Flexible and waterproof, Weather and UV resistant.
- Can be drilled, tapped, sanded and painted in less than an hour.
- Resistant against many chemicals, solvents and oils.
- Constantly temperature resistant from -40°C to 200°C.
- No shrinkage or expansion during the application or after curing.
- Bonds to all surfaces except Polypropylene (PP).
- Fast curing (starting with 5 minutes depending on UV intensity).

Applications:

HOME:

Repair and maintenance of electrical, plumbing, irrigation, pools, spas, roofs, steps, tanks, pipes, lines, gutters, switch boxes, windows, doors, fences, drainage lines, etc.

AUTOMOTIVE:

Bumpers, radiators, rusted areas and exhaust leaks, fuel tanks and lines, box bodies, headlamp housings, all kinds of plastics and body components.

HOBBY/SPORT/DIY:

Jet skis, canoes, boats, surf boards, prototyping, modeling, sporting equipment and various other surfaces like GRP, wood, metal, glass, ceramics, concrete and plastics.

Applying Quick Patch is as easy as 1...2...3...



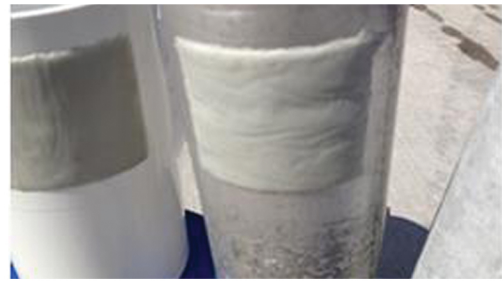
1. Surface should be cleaned, dry and free of any contaminants. Cut Quick Patch into any size you want without exposing to UV / sunlight. Place remaining material back in foil protective bag.



2. Remove white backing tape to expose the sticky resin. Apply Quick Patch to repair area with sticky side down and press firmly.



3. Remove film backing on other side of application and expose to UV or sunlight. Curing times depend on UV intensity between 5 minutes (sunny) and 50 minutes (cloudy) or use a UV light indoors with a minimum of 51 lumens.



302-231-2624

Dick.BullseyeProducts@yahoo.com

 **BULLSEYE**
PRODUCTS

www.PatchPictures.com